

# LODI ART



STILL SHE PERSISTED 1920 2020 THE RIGHT OF CITIZENS  
of THE UNITED STATES TO VOTE SHALL NOT BE DENIED OR ABRIDGED BY THE STATES

## CYCLES of SUFFRAGE

## *Lodi Public Arts*

The Public Art Program was established in September 2001 to promote permanent works of art accessible to the general public throughout the city. The program is intended to enrich the lives of residents and visitors by enlivening the visual quality of the built environment.

The goals of the Art in Public Places Advisory Board are:

- To preserve and enhance the City's environmental quality by encouraging the visual arts in public places for both public and private development.
- To also reflect the unique and diverse history, people, and geography of Lodi as an essential part of the City's identity and quality of life, and to promote opportunities for public participation in and interaction with public artworks and artists.
- To expand access to the arts for residents and visitors, with special attention to the needs of under-served audiences, such as children, low-income families, senior citizens, and disabled persons, as well as to institutionalize the Public Arts Program through policies, plans, and procedures which ensure the viability of the program and the public art collection.

The sidewalk mosaics were designed and created by the citizens of Lodi and the surrounding areas. A call to artists for designs for the mosaics was issued and many designs were received. A public vote for the designs was held and the winning designs selected. High school students and the public created the mosaics in workshops held at Hutchins Street Square. The mosaics were installed on Lodi Avenue by Public Works.

The painted signal boxes were brought to the city by the Art in Public Places Advisory Board (AiPP). A request was made to the city to allocate boxes, and it was approved. A call to artists was issued by AiPP. As designs were submitted, they were reviewed and approved. The artists receive \$300 to paint the box. In a win-win situation, the city gets public art, and the artist gets a permanent display of their art.

## Galleries & Activities

Lodi's art venues offer opportunities to view, to purchase, and to create art. The oldest of these is the Lodi Community Art Center which has had a gallery in various locations in Lodi since the 1960s and has been in its current Pine Street location for a decade. In addition to the various art stops in the business district, the city's Hutchins Street Square includes a theater featuring both local and visiting performers, hosts art shows, and offers arts related classes. Lodi Arts Foundation has periodic Art Hops throughout the city featuring artists and art activities.



### **Nava and Co**

is a charming home decor and gift boutique carrying home goods, artisan jewelry and art.

Open Wed-Sun 11-4

6 W Oak Street, Lodi, CA 95240  
(209) 327-0575  
[www.navaandco.com](http://www.navaandco.com)



### **The Mud Mill**

is a contemporary pottery studio located in the heart of downtown Lodi. The studio offers paint ready ceramics in all shapes and sizes to create a one-of-a-kind masterpiece. It's the perfect outing for the whole family!!

Open Tue-Fri 11-5, Sat-Sun 10-5

115 S. School St. #1, Downtown Lodi  
209-365-9900  
[www.themudmill.com](http://www.themudmill.com)

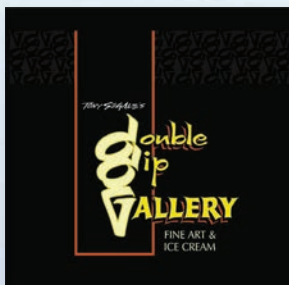


### **Lodi Community Art Center**

is an active non-profit organization of local artists and art supporters with a mission to stimulate and encourage an interest in, and a study of, the Visual Arts.

Open Fri-Sun 11-4

110 W. Pine St, Downtown Lodi  
209-333-3855  
[www.lodiartcenter.org](http://www.lodiartcenter.org)



### **Double Dip Gallery**

Enjoy a Gunthers Ice Cream while you peruse the art. Double dip is primarily a watercolor gallery but contains other hidden treasures.

Open: Mon-Thu 1-8:30, Fri 1-9:30,  
Sat 1-9:30, Sun 1-8:30  
\*Hours subject to change\*

222 W Pine St, Lodi, CA 95240



### **Changing Faces Theater Company**

is a community organization with a mission is to bring quality live theater to the Lodi area, while inspiring the next generation of artists and leaders. CFTC regularly produces literary classics as well as new works. In addition to live performances, Changing Faces offers classes and camps for children and teens.

720 W Lodi Ave, Lodi, CA 95240  
[www.changingfacestheater.org](http://www.changingfacestheater.org)

## The Story of the Murals

May 26-29, 2006, 100 artists from all over the United States and Canada gathered in the City of Lodi to paint historically themed murals. These artists, known as Walldogs, left their mark on the area in well-designed and crafted pictures as a gift to the community, coinciding with the 100th birthday of the City's incorporation. The murals and what they represent are defined and shown on the walking map inside this brochure. What can't be shown here is the enthusiasm and response from the business, organizations, and citizens of the Lodi community during the four days over the Memorial Day weekend of that year. What you see on the walls is a testament to what can happen when differences are put aside and people work together. That is the heart of the Letterhead movement. The murals will continue to be an on-going project. For further information, or to lend your support, please contact the Head West Walldogs by at 209-642-0009, or email: [tony@tonysegale.com](mailto:tony@tonysegale.com)



Lodi, A Century Past Walldog Mural  
23 W. Elm Street, East Face



Sacramento Street by Tony Segale  
209 S. Sacramento Street, North Face



Tokay Carnival & Lodi Grape Festival Walldog Mural, 230 S. School Street, South Face



The Lodi Chautauqua Walldog Mural



Cycles of Suffrage by Tony Segale  
2 N. Sacramento Street, West Face



Japan Town Memories by Tony Segale, East Elm St between Main and Stockton Streets, North and Alley Faces



Packing Shed Walldog Mural, 105 W. Walnut, South Face



Central California Traction Walldog Mural  
Lodi Parking Garage, South Face



The Cucumis Club Walldog Mural  
112 S. Church Street, South Face



Central California Traction Walldog Mural  
Lodi Parking Garage, East Face



Lodi Water Tower  
Main and Locust Streets



Luscious Cherries by Carlos Lopez  
2640 Reynolds Ranch Parkway, West Face



Breakfast of Walldogs Walldog Mural  
16 W. Elm St, East Alley Face



Farmers & Merchants Walldog Mural, 25 N. School Street, North Face



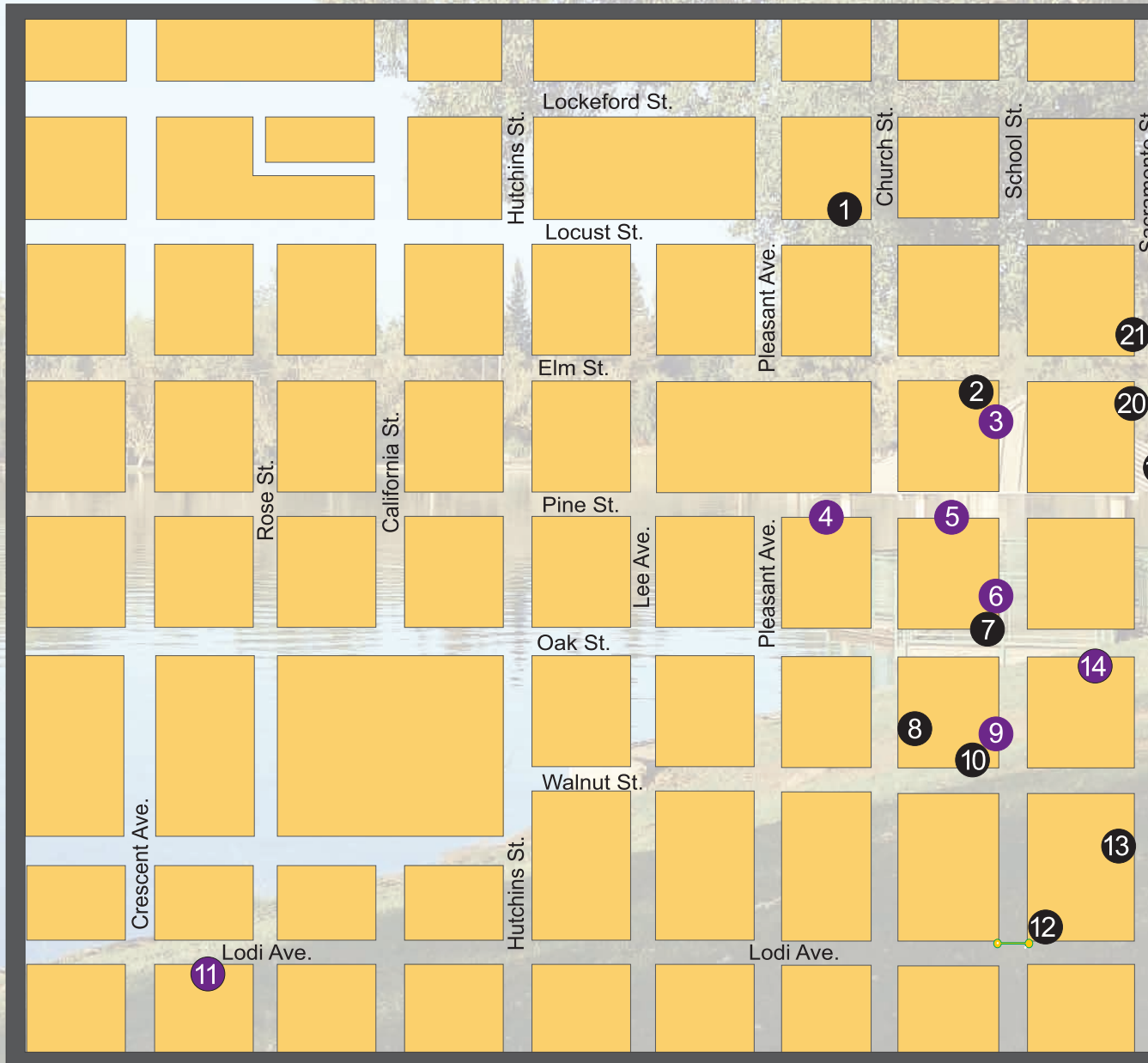
PALS by Tony Segale, 1345 W. Kettleman Lane, South Face

# Downtown Sculptures & Galleries

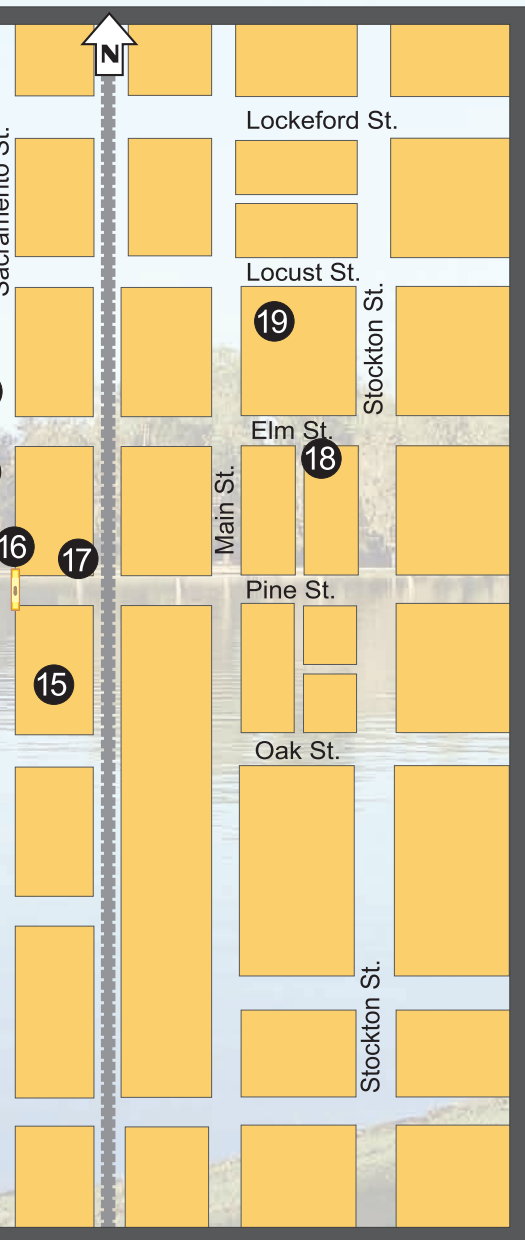
Sculptures and other 3-D artwork add to a city's character. The Lodi Arch on Pine Street is Mission Revival ceremonial sculpture, a more common style in 1907 when it was designed and built for the Tokay Carnival which was continued and would become the Lodi Grape Festival. The Gateway Arch at School St. & Lodi Ave was built by the City of Lodi in 1995. Learn more at <https://www.lodi.gov/612/Gate->

way-Arch.

Works by Rowland Cheney and by J and a bench near the post office with and the Veterans' Memorial are also



errod Mays,  
h plantings commemorating the delta region,  
among the notable sculptures in Lodi.



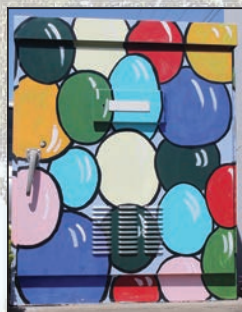
- 1 Lodi Library Sculptures
- 2 Farmers & Merchants Bank Mural
- 3 Visit Lodi
- 4 Double Dip Gallery
- 5 Lodi Art Center
- 6 Lodi Chamber of Commerce
- 7 Rowland Cheney Harvest Sculpture
- 8 The Cucumis Club Mural
- 9 The Mud Mill
- 10 The Packing Shed Mural
- 11 Changing Faces Theater
- 12 The Tokay Carnival & Lodi Grape Festival I
- 13 The Sacramento Street Mural
- 14 Nava & Co
- 15 Rowland Cheney Sandhill Crane Sculpture
- 16 Cycles of Suffrage Mural
- 17 Central California Traction Mural
- 18 Japan Town Memories Mural
- 19 Lodi Water Tower
- 20 Breakfast of Walldogs Mural
- 21 Lodi, A Century Past Mural

## Traffic Control Boxes

Since 2013 the City of Lodi's Art in Public Places projects have included an ever-growing gallery of traffic signal boxes. They are truly all around the town, from Cherokee Lane in the east to Lower Sacramento Road on the west side and from Turner Road in the north to the Reynolds Ranch development in the south, readily viewed by drivers, cyclists, and pedestrians.



*"Dreamcatcher"*  
by Natalie Magdaleno  
Century Blvd. and Hutchins St.



*"Balloons"* by Ethel Maharaj  
Lodi Ave. and Crescent St.



*"Tom Kettleman"*  
Lower Sacramento Rd. and Kettleman Ln.



*"Ship & Moon"* by Brittany Wait  
Lodi Ave. and Fairmont St.



*"Calaveras School"*  
Reynolds Ranch and Rocky Lane



*"Lollipops"* by Ethel Maharaj  
Lodi Ave. and Sacramento St.



*"Lorikeets"* by Patti Wallace  
Lower Sacramento Rd. and Century Blvd.



*"Roses"* by Daniel Kraft  
Ham Lane & Century Blvd.



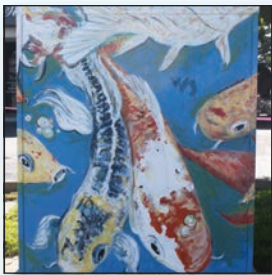
*"Grapes"* by Ethel Maharaj  
Beckman Road and Kettleman Lane



*"Rooster"*  
by Patti Wallace  
Harney Lane and Reynolds Ranch



*"Faces"*  
by Letty Nava  
Lower Sacramento Rd. and Tokay St.



*"Koi Fish"*  
by Patti Wallace  
Cherokee Lane and Hale Road



*"Poppies"*  
by Michelle Martinez  
Lower Sacramento Rd. and Vine St.



*"Lodi Wine"*  
by Pudwell/Gonzalez  
Turner and Mills



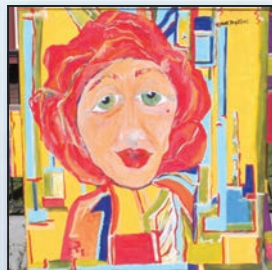
*"Bicycles"*  
by Alexa Jorke  
Stockton St. and Turner Road



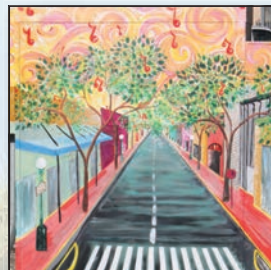
*"Loveable, Livable Lodi"*  
by Pudwell/Gonzalez  
Kofu Park



*"Wine"*  
by Julie Muela-Farris  
Ham Lane and Lodi Ave.



*"Women's Face"*  
by Patti Wallace  
Cherokee Lane and Pine St.



*"Lodi Street Scene"*  
by Katie May-Hoy  
Church St. and Lockeford St.



*"The Mountains are Calling"*  
by Miranda Garcia  
Cherokee Lane and Victor Road



*"Volkswagon"  
by Linda Poteet  
Turner Road and Church St.*



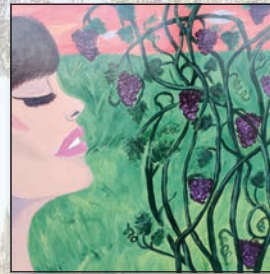
*"Great Wave"  
by Brian Ventura  
Ham Lane and Lockeford St.*



*"Monarch Butterflies"  
by Aida Nelson  
Hutchins St. and Tokay St.*



*"Pansies"  
by Missy Englehart-Selles  
Ham Lane and Lodi Ave.*



*"Nature"  
by Leilani Smith  
Lodi Ave. and Mills Ave.*



*"Sandhill Cranes"  
by Rachel Marie  
Ham Lane and Elm St.*



*"Dandelions"  
by Liz Knight-Ury  
Ham Lane and Turner Road*



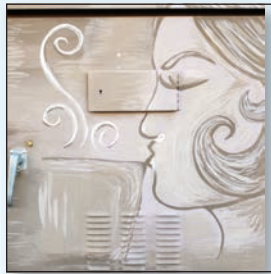
*"Day of Dead"  
by Dario Gonzales  
Ham Lane and Harney Lane*



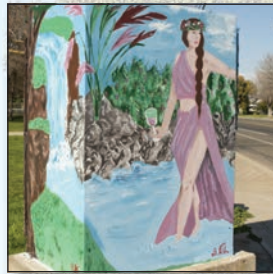
*"Koi Pond" by Joseph Lynn  
Harney Ln. and Lower Sacramento Rd.*



*"Trees and Flowers"  
by Lisa Goldman  
Harney Lane and Stockton St.*



*"Wake up and Smell the Coffee"*  
by Natalie Willis  
Lockeford St. and Sacramento St.



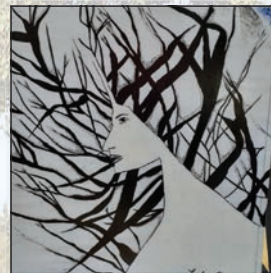
*"Woman with Deer"*  
by Brenda Chan  
Hutchins St. and Vine St.



*"Dragon"*  
by Joseph Lynn  
Ham Lane and Vine St.



*"Fall in Lodi"*  
by Liz Knight-Ury  
Lower Sacramento Rd. and Elm St.



*"Mother Nature"*  
by Leilani Perez  
Lockeford St. and Cherokee Lane



*"Flowers with Wood"*  
by Shay Livensparger  
Lower Sacramento Road at Safeway



*"Lodi Lake Bicycle"*  
by Paula Fernandez  
Lower Sacramento Rd. and Turner Rd.



*"Lodi Lake"*  
by Kaitlyn  
Hutchins St. and Harney Lane

## Thanks to...

This brochure was funded by the Lodi Arts Commission, the Lodi Arts Foundation, and the Lodi Community Art Center and produced by the Lodi Community Art Center. JC Strote and Tony Segale provided leadership in its production. The project was edited by Sylvia Chavez. Text was provided by Cathy Metcalf, Caroline Henry, and Tony Segale. Photos are by Linda Poteet, Darrell O'Sullivan, Rita Hill, JC Strote, Dean Taylor and Sylvia Chavez.

Thank you to Mike Bedford and Steve Bedford at Duncan Press for print services.

